

BNZ CAPITAL-BUSINESS NZ PSI

BNZ Capital-Business NZ PSI is a monthly survey of the services sector providing an early indicator of activity levels. A PSI reading above 50 points indicates services activity is expanding; below 50 indicates it is contracting. BNZ Capital is a division of the Bank of New Zealand

psi

Spring boost for service sector activity

BNZ Capital - Business NZ PSI for September 2009

- The BNZ Capital - Business NZ Performance of Service Index (PSI) for September increased 1.9 points from August to stand at 53.2. This was the highest overall result since February 2008, and 6.3 points higher than the September 2008 result.
- Like August, only two of the five diffusion indices that make up the PSI exhibited expansion, but involved the two key indicators of *activity/sales* (58.0) and *new orders/business* (58.6) that increased 7.5 points and 1.0 point respectively. The former was the highest result since November 2007. *Employment* (48.0) slipped back slightly from the August result, and remains in contraction now for 19 months. *Stocks/inventories* (46.9) also slipped back from the previous month, while *deliveries* (49.3) continued to show upwards movement to reach its highest result since March 2009 (albeit still in decline).
- Activity was positive for three of the four main regions during September, with the *Northern* region (55.8) recording its highest result since November 2007, as well as the strongest regional result for the current month. The *Central* region (50.4) fell back slightly from August, although still exhibited slight expansion. The *Canterbury/Westland* region (51.5) also experienced a dip in expansion after consecutive values above 53.0, while the *Otago/Southland* region (45.6) dropped back to levels experienced in June/July after a brief recovery in August.
- Results for the various service sectors were mostly positive for September, with *wholesale trade* (60.8) showing significant improvement from August and leading the way for September. This was followed by *health & community services* (56.8) and *retail trade* (54.8). *Accommodation, cafes & restaurants* (40.9) fell back from August, as did *property & business services* (47.9).
- Two of the four firms by employment size showed expansion during September, with small-medium sized firms (11-50 workers) (58.2) continuing to build on results over previous months. Medium-large sized firms (51-100 workers) (52.1) experienced a dip from August but still in expansion, while large sized firms (101+ workers) (46.7) went into decline for the current month. Micro sized firms (1-10 workers) (49.9) was largely unchanged for September.
- The improvement in overall activity levels was again mirrored by the proportion of negative comments from respondents dropping to 46.8% in September, compared with 49.5% in August, 51.9% in July and 58.8% in June.

The BNZ Capital - Business NZ Performance of Services Index is a monthly survey of the services sector providing an early indicator of activity levels. A PSI reading above 50 points indicates services activity is expanding; below 50 indicates it is contracting.

HIGHLIGHTS

- **Service sector activity at highest level since February 2008.**
- **Production and new orders/business key indicators for continued expansion.**
- **Regional and sector activity mixed, with Northern region at highest level since November 2007.**

**Next BNZ Capital - Business NZ PSI:
16 November 2009**

SPONSOR STATEMENT

BNZ Capital is delighted to be associated with the Performance of Services Index (PSI) and Business NZ. This association brings together the significant experience of leading business advocacy body Business NZ, and business finance specialist BNZ. We look forward to continuing our association with Business NZ and associated regional organisations, and to playing our part in the ongoing development of the New Zealand services sector. BNZ Capital is a division of Bank of New Zealand Ltd.

BNZ Capital (www.bnzcapiital.co.nz)

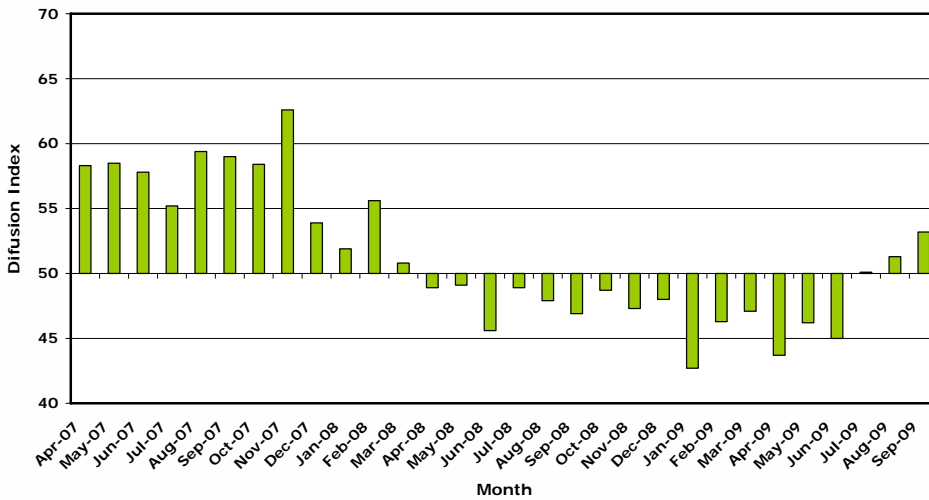
*Respondents are asked for a score from 1-5, where 1= large rise and 5= large fall.

BNZ CAPITAL-BUSINESS NZ PSI

BNZ Capital-Business NZ PSI is a monthly survey of the services sector providing an early indicator of activity levels. A PSI reading above 50 points indicates services activity is expanding; below 50 indicates it is contracting. BNZ Capital is a division of the Bank of New Zealand

psi

BNZ Capital - Business NZ Performance of Services Index Time Series (April 2007 - September 2009)



PSI time series tables

| National Indexes | Sep 2007 | Sep 2008 | June 2009 | July 2009 | Aug 2009 | Sep 2009 |
|-------------------------------|----------|----------|-----------|-----------|----------|----------|
| BNZ Capital - Business NZ PSI | 59.0 | 46.9 | 45.0 | 50.1 | 51.3 | 53.2 |
| Activity/Sales | 60.7 | 43.9 | 43.9 | 51.7 | 50.5 | 58.0 |
| Employment | 53.1 | 45.8 | 43.6 | 47.9 | 49.3 | 48.0 |
| New Orders/Business | 65.4 | 49.4 | 50.8 | 56.5 | 57.6 | 58.6 |
| Stocks/Inventories | 57.1 | 53.0 | 41.0 | 42.1 | 48.0 | 46.9 |
| Supplier Deliveries | 56.8 | 45.6 | 42.2 | 46.0 | 47.9 | 49.3 |

| Regional Indexes | Sep 2007 | Sep 2008 | June 2009 | July 2009 | Aug 2009 | Sep 2009 |
|-------------------------------|----------|----------|-----------|-----------|----------|----------|
| BNZ Capital - Business NZ PSI | 59.0 | 46.9 | 45.0 | 50.1 | 51.3 | 53.2 |
| Northern | 58.7 | 46.5 | 44.4 | 51.2 | 50.2 | 55.8 |
| Central | 56.5 | 52.7 | 45.8 | 45.8 | 51.6 | 50.4 |
| Canterbury/Westland | 61.2 | 50.9 | 47.5 | 53.1 | 53.9 | 51.5 |
| Otago/Southland | 61.9 | 37.0 | 44.8 | 43.7 | 58.0 | 45.6 |

PARTICIPANTS

Business NZ gratefully acknowledges the participation of the following associations in contributing to the PSI:

- Employers & Manufacturers Association (Northern)
- Employers & Manufacturers Association (Central)
- Canterbury Employers' Chamber of Commerce
- Otago Southland Employers Association
- Hospitality Association of New Zealand
- New Zealand Retailers Association
- Tourism Industry Association New Zealand

19 October 2009

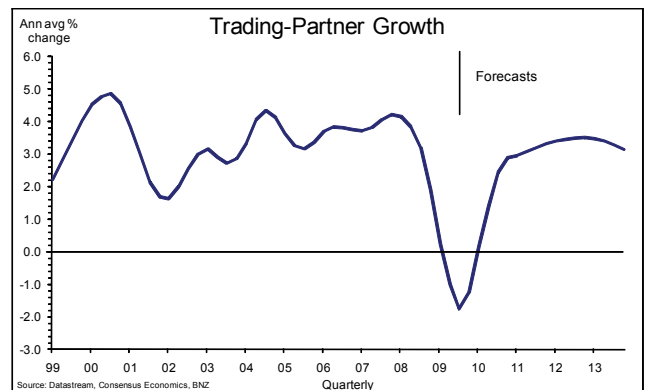
Overview

Domestic and international growth continues to push higher – so much so that the economy will be expanding at an above-trend pace by the end of next year. However, with the unemployment rate expected to rise further, the New Zealand dollar appreciating, and plenty of spare capacity still available, inflation will remain well contained. Consequently, we think it unlikely the central bank will begin raising interest rates until mid 2010. The current strength of the NZD is causing some angst for many and we think it will remain problematic until the economic cycle peaks.

| Key Indicators | December Years | | | Forecasts | | |
|-------------------------------------|----------------|-------------|-------------|-----------|------|------|
| | Actual 2006 | Actual 2007 | Actual 2008 | 2009 | 2010 | 2011 |
| GDP production (an avg %) | 1.9 | 3.2 | 0.0 | -1.6 | 2.3 | 3.3 |
| Consumers Price Index (ann %) | 2.6 | 3.2 | 3.4 | 1.8 | 0.7 | 2.1 |
| Unemployment Rate (end qtr %) | 3.8 | 3.5 | 4.7 | 7.0 | 7.4 | 6.3 |
| Current Account (% of GDP) | -8.6 | -8.1 | -8.9 | -3.6 | -5.7 | -6.0 |
| Fiscal Balance (% GDP June Yr) | 4.5 | 3.5 | 3.1 | -1.6 | -4.4 | -5.1 |
| NZD/USD (Dec mth ave) | 0.69 | 0.77 | 0.56 | 0.74 | 0.75 | 0.67 |
| Overnight Cash Rate (Dec mth end %) | 7.25 | 8.25 | 5.00 | 2.50 | 3.75 | 5.75 |
| 10 Year Govt Bond (Dec mth ave %) | 5.77 | 6.40 | 4.88 | 5.50 | 6.00 | 6.80 |

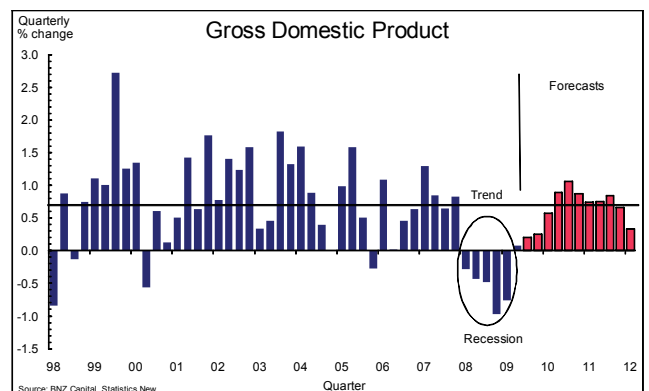
International

Expectations for global growth continue to be revised higher. From New Zealand's perspective the weighted average growth rate of our trading partners is expected to rise to 2.9% in calendar 2010 from -1.3% in 2009. 2011 looks better still at 3.3%. Nonetheless, severe risks to the global outlook remain. These include: the process by which the Federal Reserve removes quantitative easing in the United States; the removal of fiscal and monetary stimulus world-wide; the apparent "excess exuberance" driving Chinese production; ongoing banking sector issues; the necessary realignment of emerging market currencies, and the process by which that realignment will occur.



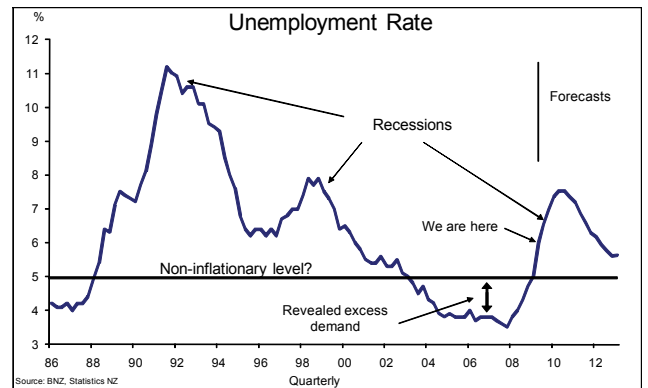
Growth

New Zealand came out of technical recession in the second quarter of this year. More importantly, all of the economy's key leading indicators are pointing to a much stronger year ahead. We estimate that GDP contracted 1.6% over calendar 2009. A 2.3% expansion is forecast for 2010 rising to 3.3% in 2011. While there is little doubt a sharp acceleration in activity is in the immediate offing, there remain significant uncertainties as to the sustainability of the expansion given the imbalances that remain including the poor household savings ratio, mounting international debt and the deteriorating fiscal position. Moreover, the current pace of the currency's appreciation will have significant negative medium term effects on the expansion.



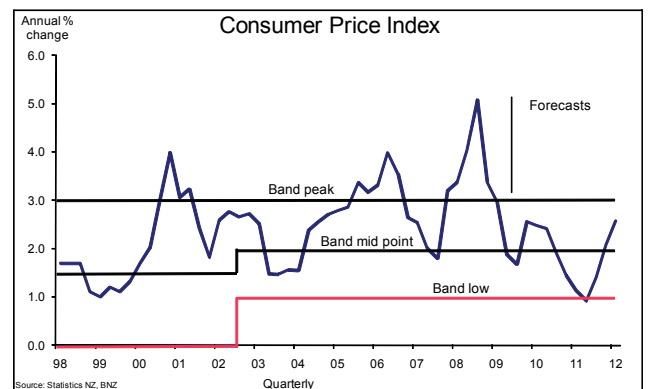
Labour Market

The unemployment rate is rising sharply. As at the end of June total job losses had climbed to 40,000 and had resulted in the unemployment rate climbing to 6.0% from a low of 3.5% back in the December quarter of 2007. We believe substantial further weakening in the labour market is likely with the unemployment rate set to peak at 7.5% mid next year. While this is a poor outlook, it is notable that unemployment is likely to peak at a lower level than in the last two major downturns. Unsurprisingly, with plenty of spare labour capacity developing, wage growth is well contained.



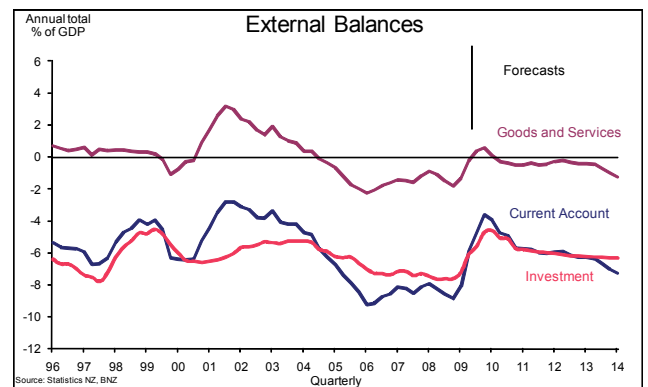
Inflation

There is no inflation problem in New Zealand, now or for the foreseeable future. In fact there is much more risk that CPI inflation will fall below the central bank's target band than there is of an upside surprise. Indeed, we are forecasting annual inflation to fall to a low of 0.9% in the year to June 2011. In the first instance, the driving disinflationary force is the rapidly appreciating New Zealand dollar but this is also being assisted by the fact that the economy is operating well below capacity and will stay that way for some time. We are forecasting annual CPI inflation of 2.6% for the year ended December 2009, 1.4% for 2010 and 2.1% in 2011.



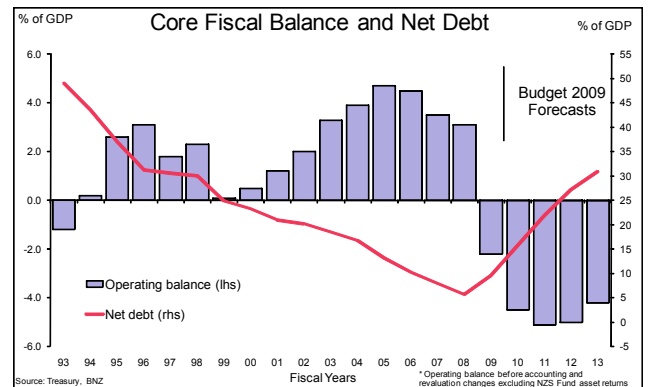
External Accounts

New Zealand's current account deficit is shrinking fast. In the December quarter of 2008 it peaked at 8.9% of GDP. It has since fallen to 5.9% and we believe it will be below 4.0% by year's end. The main driver of this is the sharp improvement in the international investment income deficit. A big chunk of this can be attributed to recent court rulings against the country's biggest banks, and in favour of the Inland Revenue Department, which is resulting in a \$1bn-plus drop in direct investment income debits. Of course, this will have only a transitory impact on the accounts and is not reflective of an underlying reduction in New Zealand's imbalances. Nonetheless, it will be hard to argue that the NZD should be forced lower by growing current account deficits when the headline measure is going exactly the opposite way.



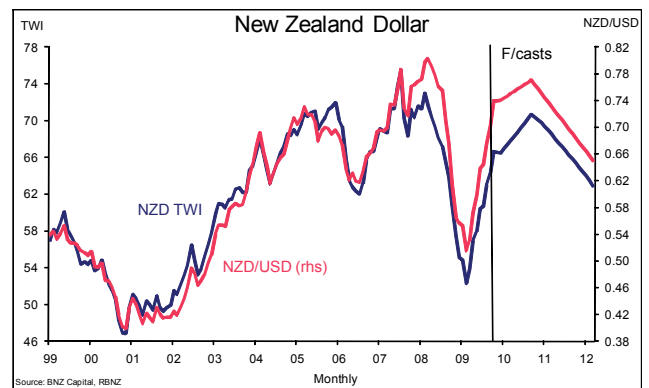
Fiscal Policy

The Government will be hoping that the stronger than expected growth outlook will translate into improved fiscal balances. So far, however, there is scant evidence of this. Whatever the case, the Government will have to soon shift its policy stance from accommodative to contractionary if it is to get its books in order. There are only three ways to do this: raise taxes, broaden the tax base and reduce spending. The first option has been ruled out. The second two are being heavily investigated. Watch in particular for recommendations from the VUW tax working group. Currently, capital gains taxes seem out of favour but the possibility of a land tax is very real.



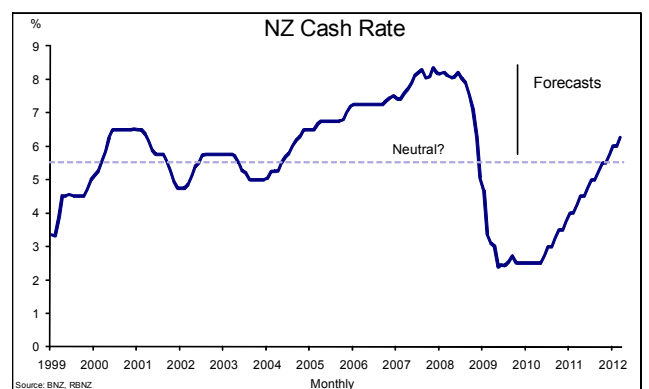
Exchange Rate

The New Zealand dollar is going from strength to strength aided by falling global risk aversion, commodity price increases and heightened optimism for both global and domestic growth. Adding further impetus is the growing belief that the RBNZ will be amongst the first central banks in the world to raise its cash rate, a view assisted by the fact that the RBA has already hiked by 25 basis points. Notwithstanding that the Kiwi remains very prone to a substantial corrective pull-back, we maintain our view that it is unlikely to display any substantive downward trend until the economic cycle peaks mid next year.



Interest Rates

The Reserve Bank has made things difficult for itself by sticking to its view that the first hike in the cash rate will not occur until the December quarter of 2010. We maintain our view that the Bank will be forced to move closer to mid-year. Formally, we are calling for the first tightening in June. Equally, however, we think market pricing for a January hike is premature given that: the New Zealand dollar is having a substantial disinflationary impact on the economy; retail interest rates are already being set as if the cash rate was much higher; bank lending growth to both businesses and households is very low; the RBNZ believes the recent resurgence in the housing market will be short-lived; the Bank already has strong GDP growth forecasts built into its projections; and the unemployment rate continues to rise.



stephen_toplis@bnz.co.nz

Contact Details

BNZ Capital



Stephen Toplis
Head of Research
+(64 4) 474 6905

Craig Ebert
Senior Economist
+(64 4) 474 6799

Mark Walton
Economist
+(64 4) 474 6923

Danica Hampton
Senior Strategist
+(64 4) 472 4767

Mike Jones
Strategist
+(64 4) 472 4767

Main Offices

Wellington
1 Willis Street
PO Box 2392
Wellington 6140
New Zealand
Phone: +(64 4) 474 6145
FI: 0800 283 269
Fax: +(64 4) 474 6266

Auckland
125 Queen Street
PO Box 2139
Shortland Street
Auckland 1140
New Zealand
Phone: +(64 9) 976 5762
Toll Free: 0800 081 167

Christchurch
129 Hereford Street
PO Box 1461
Christchurch 8140
New Zealand
Phone: +(64 3) 353 2219
Toll Free: 0800 854 854

National Australia Bank



Peter Jolly
Head of Research
+(61 2) 9295 1199

Alan Oster
Group Chief Economist
+(61 3) 8641 3464

Rob Henderson
Chief Economist, Markets
+(61 2) 9237 1836

John Kyriakopoulos
Currency Strategist
+(61 2) 9237 1903

Contact Phone Numbers

Wellington
Foreign Exchange +800 642 222
Fixed Income/Derivatives +800 283 269

Sydney
Foreign Exchange +800 9295 1100
Fixed Income/Derivatives +(61 2) 9295 1166

London
Foreign Exchange +800 333 00 333
Fixed Income/Derivatives +(44 20) 7796 4761

New York
Foreign Exchange +1 800 125 602
Fixed Income/Derivatives +1877 377 5480

Hong Kong
Foreign Exchange +(85 2) 2526 5891
Fixed Income/Derivatives +(85 2) 2526 5891

24 HOUR FOREIGN EXCHANGE SERVICE

Phone Toll Free 6am to 10pm NZT – Wellington Office
0800 739 707 10pm to 6am NZT – London Office – Olivia Core

ANALYST DISCLAIMER: The person or persons named as the author(s) of this report hereby certify that the views expressed in the research report accurately reflect their personal views about the subject securities and issuers and other subject matters discussed. No part of their compensation was, is, or will be, directly or indirectly, related to the specific recommendations or views expressed in the research report. Research analysts responsible for this report receive compensation based upon, among other factors, the overall profitability of the Markets Division which is part of nabCapital a division of National Australia Bank Limited, a member of the National Australia Bank Group ("NAB"). The views of the author(s) do not necessarily reflect the views of NAB and are subject to change without notice. NAB may receive fees for banking services provided to an issuer of securities mentioned in this report. NAB, its affiliates and their respective officers, and employees, including persons involved in the preparation or issuance of this report (subject to the policies of the National), may also from time to time maintain a long or short position in, or purchase or sell a position in, hold or act as advisors, brokers or commercial bankers in relation to the securities (or related securities and financial instruments) of companies mentioned in this report. NAB or its affiliates may engage in these transactions in a manner that is inconsistent with or contrary to any recommendations made in this report.

NEW ZEALAND DISCLAIMER: This publication has been provided for general information only. Although every effort has been made to ensure this publication is accurate the contents should not be relied upon or used as a basis for entering into any products described in this publication. BNZ Capital, a division of Bank of New Zealand, strongly recommends readers seek independent legal/financial advice prior to acting in relation to any of the matters discussed in this publication. Neither BNZ Capital nor any person involved in this publication accepts any liability for any loss or damage whatsoever may directly or indirectly result from any advice, opinion, information, representation or omission, whether negligent or otherwise, contained in this publication.

US DISCLAIMER: This information has been prepared by National Australia Bank Limited or one of its affiliates or subsidiaries ("NAB"). If it is distributed in the United States, such distribution is by nabCapital Securities, LLC which accepts responsibility for its contents. Any U.S. person receiving this information wishes further information or desires to effect transactions in the securities described herein should call or write to nabCapital Securities, LLC, 28th Floor, 245 Park Avenue, New York, NY 10167 (or call (877) 377-5480). The information contained herein has been obtained from, and any opinions herein are based upon, sources believed to be reliable and no guarantees, representations or warranties are made as to its accuracy, completeness or suitability for any purpose. Any opinions or estimates expressed in this information is our current opinion as of the date of this report and is subject to change without notice. The principals of nabCapital Securities, LLC or NAB may have a long or short position or may transact in the securities referred to herein or hold or transact derivative instruments, including options, warrants or rights with securities, or may act as a market maker in the securities discussed herein and may sell such securities to or buy from customers on a principal basis. This material is not intended as an offer or solicitation for the purchase or sale of the securities described herein or for any other action. It is intended for the information of clients only and is not for publication in the press or elsewhere.

